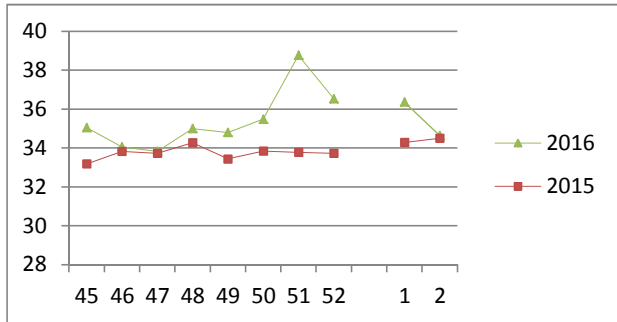


## NATIONAL SOUTH AFRICAN PRICE INFORMATION FOR WEEK 2

From 2016/01/11 To 2016/01/17

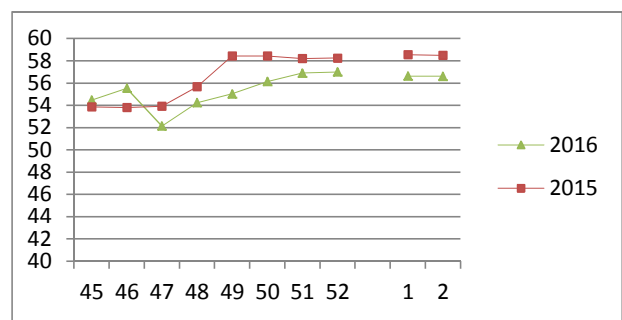
Class	Units	Avg Mass	Avg Purch Price	Avg Selling Price	Selling min	Selling max
<b>CATTLE</b>						
A2	8078	262.90	<b>34.82</b>	<b>34.64</b>	28.12	39.50
A3	1008	283.14	<b>34.58</b>	<b>34.98</b>	29.35	39.38
AB2	381	256.07	<b>33.46</b>	<b>32.49</b>	28.38	35.81
AB3	62	276.32	<b>34.06</b>	<b>33.62</b>	29.28	35.81
B2	360	242.86	<b>30.44</b>	<b>29.36</b>	27.05	32.00
B3	41	286.99	<b>30.72</b>	<b>30.92</b>	27.94	32.17
C2	1330	249.22	<b>27.81</b>	<b>27.24</b>	25.73	31.00
C3	226	279.18	<b>28.84</b>	<b>27.49</b>	25.82	31.00
	11 486					

**Beef A2 - Sales Price**



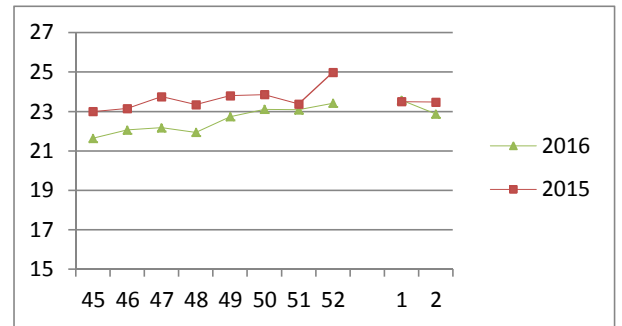
Class	Units	Avg Mass	Avg Purch Price	Avg Selling Price	Selling min	Selling max
<b>LAMB/SHEEP</b>						
A0	214	12.49	<b>41.65</b>	<b>42.52</b>	32.04	57.50
A1	772	13.68	<b>52.12</b>	<b>52.53</b>	42.50	57.50
A2	6514	18.93	<b>55.78</b>	<b>56.61</b>	46.68	62.66
A3	2711	21.22	<b>55.09</b>	<b>56.70</b>	51.00	65.41
A4	690	23.62	<b>42.02</b>	<b>44.36</b>	39.00	59.00
A5	165	23.70	<b>39.18</b>	<b>36.85</b>	34.50	50.00
A6	113	23.60	<b>39.41</b>	<b>36.85</b>	33.90	48.22
AB2	288	18.52	<b>45.49</b>	<b>46.32</b>	40.00	62.10
AB3	66	21.10	<b>46.84</b>	<b>48.12</b>	40.00	62.70
B2	167	21.70	<b>40.47</b>	<b>44.59</b>	34.91	47.95
B3	44	26.74	<b>43.14</b>	<b>43.43</b>	30.00	47.95
C2	810	22.45	<b>37.58</b>	<b>40.49</b>	34.03	46.20
C3	110	25.67	<b>37.76</b>	<b>39.48</b>	30.73	47.00
	12 664					

**Lamb A2 - Sales Price**



Class	Units	Avg Mass	Avg Purch Price	Purch Min	Purch Max
<b>PIGS</b>					
BC	23	75.578	<b>20.47</b>	19.00	23.00
BO	1564	107.01	<b>22.88</b>	21.50	26.25
BP	3663	74.8	<b>23.11</b>	21.50	26.00
BR	130	77.619	<b>21.13</b>	14.60	25.00
BS	2	89.60	<b>14.71</b>	13.57	16.00
BU	7	70.386	<b>19.88</b>	18.25	20.50
PC	4	47.8	<b>21.55</b>	21.50	21.61
PO	97	50.53	<b>24.85</b>	21.50	28.40
PP	1078	49.96	<b>25.48</b>	21.50	28.33
PR	18	43.61	<b>22.30</b>	21.00	24.50
SAS	237	157.33	<b>16.08</b>	14.25	17.62
HP	6	82.217	<b>21.56</b>	19.00	26.00
HO	1481	87.913	<b>22.41</b>	21.50	26.00
HR	1137	81.795	<b>23.44</b>	21.50	25.94
HC	234	77.754	<b>21.62</b>	20.25	25.86
CP	1	56.4	<b>19.60</b>	19.60	19.60
CO	61	60.94	<b>25.67</b>	23.00	26.09
CR	578	60.795	<b>25.16</b>	10.00	26.00
CC	4	62.175	<b>24.7</b>	23.40	26.00
	10 325				

**Baconer BO - Purchase Price**



Hide	Feedlot	13.21
	Veldt	13.08
Dorper	ea	82.50
Merino	ea	79.79

**THIS INFORMATION IS PROTECTED AGAINST COPYING OR DISTRIBUTION WITHOUT PRIOR PERMISSION FROM THE RMAA BOARD.**

**FOR ENQUIRIES, PLEASE CONTACT RMAA AT TEL (012) 349 1237/8 or [priceinformation@rmaa.co.za](mailto:priceinformation@rmaa.co.za)**

Disclaimer: In no event shall the RMAA be liable for any direct, special, indirect or consequential damages, or any other damages of any kind, including but not limited to loss of use, loss of profits, or loss of data, whether in an action in contract, tort (including but not limited to negligence), or otherwise, arising out of or in any way connected with the use of this information. While the RMAA takes great care in compiling the contents of this page, it is nevertheless only meant to provide non-binding general information and cannot replace detailed individual advice to help the prospective buyer make his decision. The RMAA does not guarantee that the information on these pages is up-to-date, accurate and complete.