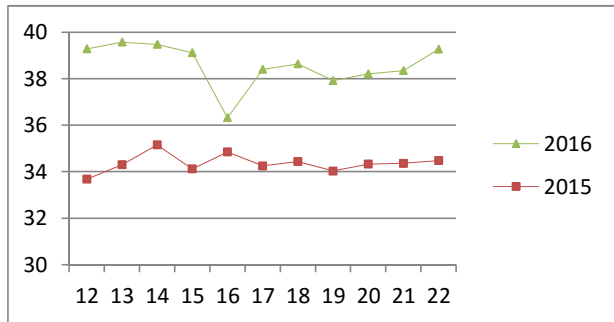


# NATIONAL SOUTH AFRICAN PRICE INFORMATION FOR WEEK 22

From 2016/05/30 To 2016/06/05

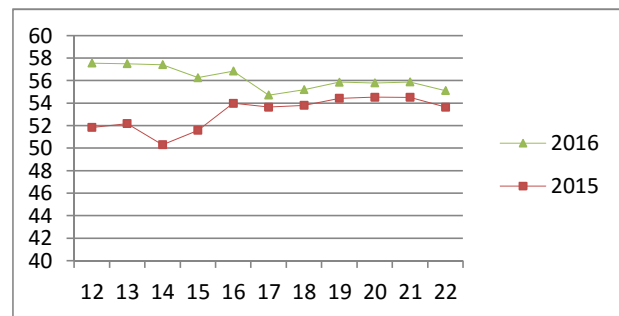
Class	Units	Avg Mass	Avg Purch Price	Avg Selling Price	Selling min	Selling max
<b>CATTLE</b>						
A2	9873	263.25	<b>38.79</b>	<b>39.26</b>	23.80	40.93
A3	2092	281.18	<b>38.67</b>	<b>39.33</b>	36.49	40.06
AB2	510	254.21	<b>36.67</b>	<b>37.57</b>	26.00	39.90
AB3	109	297.96	<b>36.31</b>	<b>38.00</b>	30.00	40.00
B2	475	253.45	<b>31.88</b>	<b>32.77</b>	25.00	37.73
B3	93	289.59	<b>32.28</b>	<b>33.29</b>	27.50	37.30
C2	1469	254.51	<b>28.90</b>	<b>50.36</b>	27.00	240.51
C3	508	286.68	<b>28.86</b>	<b>31.11</b>	26.00	33.80
	15,129					

**Beef A2 - Sales Price**



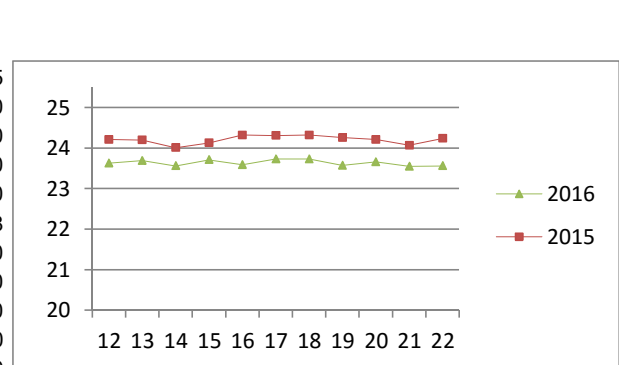
Class	Units	Avg Mass	Avg Purch Price	Avg Selling Price	Selling min	Selling max
<b>LAMB/SHEEP</b>						
A0	171	14.70	<b>44.38</b>	<b>46.21</b>	35.39	49.63
A1	773	16.64	<b>55.77</b>	<b>54.35</b>	48.00	58.45
A2	12833	20.44	<b>56.68</b>	<b>55.09</b>	48.92	70.00
A3	1734	22.00	<b>56.72</b>	<b>55.88</b>	53.67	60.59
A4	345	22.70	<b>49.95</b>	<b>51.64</b>	47.45	66.53
A5	92	23.35	<b>43.58</b>	<b>48.16</b>	41.30	52.16
A6	156	21.36	<b>43.16</b>	<b>44.09</b>	39.62	55.00
AB2	324	19.76	<b>47.70</b>	<b>51.18</b>	46.24	56.30
AB3	58	23.69	<b>47.53</b>	<b>51.00</b>	45.64	54.00
B2	151	22.60	<b>41.57</b>	<b>45.83</b>	40.00	57.21
B3	53	26.08	<b>41.66</b>	<b>44.15</b>	40.00	48.00
C2	1306	22.69	<b>40.51</b>	<b>40.23</b>	37.00	47.60
C3	550	26.37	<b>41.94</b>	<b>40.35</b>	37.00	47.00
	18,546					

**Lamb A2 - Sales Price**



Class	Units	Avg Mass	Avg Purch Price	Purch Min	Purch Max
<b>PIGS</b>					
BP	4448	74.26	<b>24.26</b>	23.50	26.75
BO	1552	75.12	<b>24.28</b>	22.55	25.00
BR	146	75.64	<b>23.75</b>	22.90	24.00
BC	15	75.25	<b>20.87</b>	19.91	23.00
BU	1	67.70	<b>13.00</b>	13.00	13.00
PP	883	49.24	<b>25.49</b>	22.22	27.18
PO	125	48.96	<b>25.01</b>	20.79	27.20
PR	19	42.54	<b>24.50</b>	21.37	25.50
PC	1	38.70	<b>24.00</b>	24.00	24.00
SAS	422	138.33	<b>16.22</b>	15.00	20.00
HP	3384	86.23	<b>24.08</b>	23.52	25.00
HO	3503	88.14	24.19	23.51	25.00
HR	626	89.52	<b>23.54</b>	21.37	24.00
HC	67	90.89	<b>19.76</b>	13.00	22.50
HU	14	89.84	<b>18.23</b>	11.00	19.51
HS	3	89.70	<b>17.70</b>	15.00	20.00
CP	781	60.84	<b>25.11</b>	22.68	26.75
CO	572	79.49	<b>24.59</b>	23.50	26.00
CR	189	84.83	<b>24.50</b>	23.74	25.00
CC	18	81.14	<b>23.17</b>	16.00	24.50
CU	1	58.30	22.00	22.00	22.00
CS	5	95.64	24.50	24.50	24.50
SAB	164	114.75	12.21	6.00	20.00
	16,939				

**Baconer BO - Purchase Price**



Hide	Feedlot	15.27
	Veldt	15.33
Dorper	ea	58.00
Merino	ea	87.27

**THIS INFORMATION IS PROTECTED AGAINST COPYING OR DISTRIBUTION WITHOUT PRIOR PERMISSION FROM THE RMAA BOARD.**

**FOR ENQUIRIES, PLEASE CONTACT RMAA AT TEL (012) 349 1237/8 or [priceinformation@rmaa.co.za](mailto:priceinformation@rmaa.co.za)**

Disclaimer: In no event shall the RMAA be liable for any direct, special, indirect or consequential damages, or any other damages of any kind, including but not limited to loss of use, loss of profits, or loss of data, whether in an action in contract, tort (including but not limited to negligence), or otherwise, arising out of or in any way connected with the use of this information. While the RMAA takes great care in compiling the contents of this page, it is nevertheless only meant to provide non-binding general information and cannot replace detailed individual advice to help the prospective buyer make his decision. The RMAA does not guarantee that the information on these pages is up-to-date, accurate and complete.