

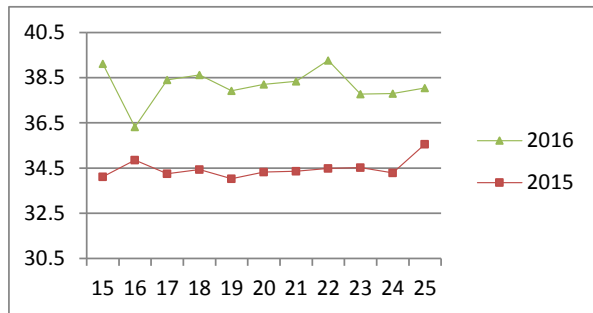
NATIONAL SOUTH AFRICAN PRICE INFORMATION FOR WEEK 25

Class Units Avg Mass Avg Purch Price Avg Selling Price Selling min Selling max From 2016/06/20 To 2016/06/26

CATTLE

Class	Units	Avg Mass	Avg Purch Price	Avg Selling Price	Selling min	Selling max
A2	11053	263.04	37.78	38.05	32.01	42.88
A3	2083	279.18	37.80	38.26	36.30	42.10
AB2	657	256.32	35.45	35.72	29.00	38.50
AB3	112	286.71	35.83	35.62	29.50	37.90
B2	693	253.99	31.48	32.79	28.50	40.74
B3	130	289.06	31.64	32.85	29.00	40.74
C2	2753	250.61	28.48	28.97	27.00	34.50
C3	731	284.86	28.89	29.46	27.00	34.50
	18 212					

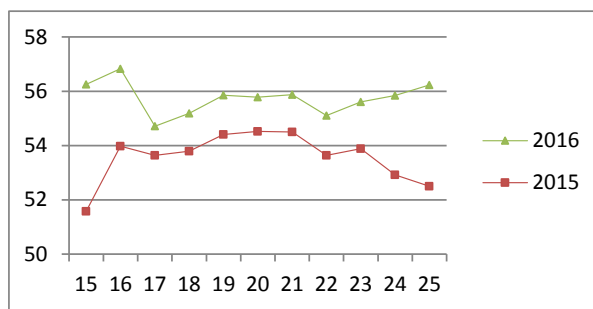
Beef A2 - Sales Price



LAMB/SHEEP

Class	Units	Avg Mass	Avg Purch Price	Avg Selling Price	Selling min	Selling max
A0	112	12.45	46.50	45.64	42.45	52.00
A1	539	15.42	54.91	54.19	49.42	58.00
A2	10700	21.13	57.67	56.23	53.00	64.08
A3	1872	22.52	57.35	56.22	48.12	63.00
A4	439	23.68	50.89	48.79	42.00	58.00
A5	85	23.76	44.07	43.65	39.48	49.81
A6	118	24.25	42.67	42.63	39.65	48.62
AB2	192	22.91	50.08	50.33	42.00	56.00
AB3	23	26.60	50.94	46.07	32.00	56.00
B2	192	24.67	44.08	45.25	40.00	51.00
B3	31	28.08	44.26	45.43	40.00	49.48
C2	937	23.67	41.40	43.55	38.68	47.60
C3	213	26.97	41.65	42.87	39.30	45.00
	15 453					

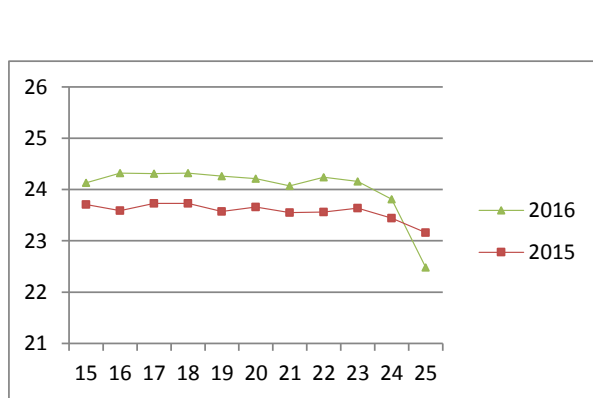
Lamb A2 - Sales Price



PIGS

Class	Units	Avg Mass	Avg Purch Price	Purch Min	Purch Max
BP	6644	73.96	22.93	19.10	26.50
BO	2970	76.26	22.48	17.59	25.00
BR	270	75.88	22.22	18.42	23.80
BC	22	75.34	20.93	19.88	22.10
BU	5	68.17	20.62	18.72	22.00
BS	10	74.56	18.41	16.50	23.50
PP	1041	48.56	25.30	18.00	27.20
PO	92	49.19	23.84	22.80	27.20
PR	49	44.48	23.77	22.30	24.25
PU	2	54.85	20.20	20.20	20.20
PS	5	43.25	20.34	17.30	24.00
SAB	191	101.90	13.19	10.50	17.30
HP	3811	86.73	23.67	21.00	24.66
HO	4597	88.58	23.57	21.00	24.53
HR	874	89.42	23.12	12.80	23.94
HC	174	91.34	20.71	19.58	23.00
HU	27	93.89	19.38	10.40	21.00
HS	17	97.13	21.40	9.40	23.00
CP	1043	61.13	24.56	23.00	26.75
CO	184	62.22	23.83	23.00	25.58
CR	29	63.15	22.91	21.00	24.00
CC	2	59.94	17.66	16.00	19.37
SAS	321	140.825	17.79	15.00	23.00
	22 380				

Baconer BO - Purchase Price



Hide	Feedlot	15.39
	Veldt	15.28
Dorper	ea	55.00
Merino	ea	90.73

THIS INFORMATION IS PROTECTED AGAINST COPYING OR DISTRIBUTION WITHOUT PRIOR PERMISSION FROM THE RMAA BOARD.

FOR ENQUIRIES, PLEASE CONTACT RMAA AT TEL (012) 349 1237/8 or priceinformation@rmaa.co.za

Disclaimer: In no event shall the RMAA be liable for any direct, special, indirect or consequential damages, or any other damages of any kind, including but not limited to loss of use, loss of profits, or loss of data, whether in an action in contract, tort (including but not limited to negligence), or otherwise, arising out of or in any way connected with the use of this information. While the RMAA takes great care in compiling the contents of this page, it is nevertheless only meant to provide non-binding general information and cannot replace detailed individual advice to help the prospective buyer make his decision. The RMAA does not guarantee that the information on these pages is up-to-date, accurate and complete.