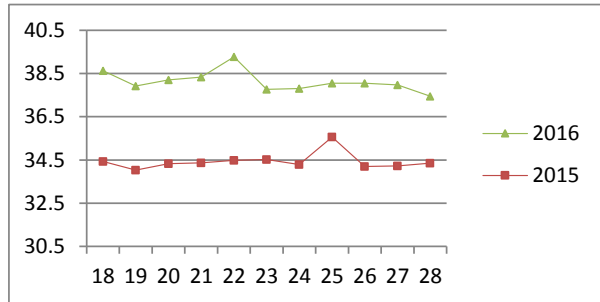


NATIONAL SOUTH AFRICAN PRICE INFORMATION FOR WEEK 28

From 2016/07/11 To 2016/07/17

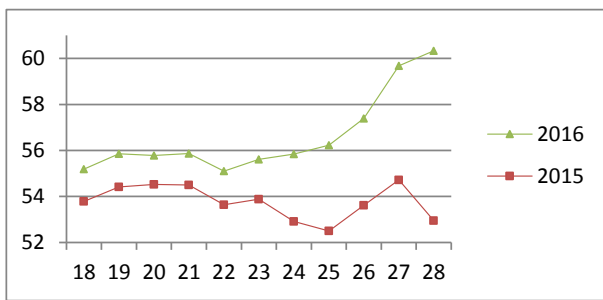
Class	Units	Avg Mass	Avg Purch Price	Avg Selling Price	Selling min	Selling max
CATTLE						
A2	13797	264.11	37.61	37.45	32.04	39.16
A3	1503	284.88	37.81	37.20	35.65	39.48
AB2	614	266.76	35.80	36.33	30.96	38.50
AB3	106	289.38	35.40	35.80	31.00	37.61
B2	632	269.86	32.74	33.21	27.36	37.64
B3	120	295.04	31.95	33.30	29.50	37.64
C2	2187	251.62	30.18	30.47	26.50	32.50
C3	688	244.25	30.05	30.65	26.29	32.50
19 647						

Beef A2 - Sales Price



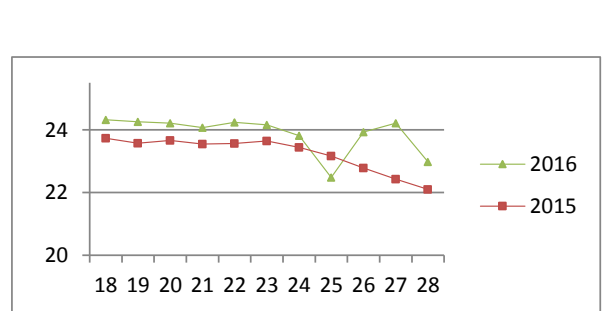
Class	Units	Avg Mass	Avg Purch Price	Avg Selling Price	Selling min	Selling max
LAMB/SHEEP						
A0	240	12.25	48.01	48.03	39.60	53.50
A1	838	16.33	60.04	59.58	47.00	61.00
A2	8479	22.05	57.41	60.33	54.00	64.01
A3	1320	24.66	57.08	60.11	55.00	63.00
A4	219	24.73	49.94	52.65	48.00	62.00
A5	41	25.45	43.54	47.42	41.30	57.42
A6	25	23.01	41.11	45.15	39.00	55.00
AB2	161	24.41	51.15	52.47	45.00	59.70
AB3	51	24.16	50.61	51.61	45.00	59.70
B2	283	24.81	45.25	45.40	43.00	50.40
B3	45	26.54	45.17	44.01	41.50	45.93
C2	410	25.58	45.73	45.61	42.00	48.00
C3	220	28.18	45.63	45.04	43.00	48.00
12 332						

Lamb A2 - Sales Price



Class	Units	Avg Mass	Avg Purch Price	Purch Min	Purch Max
PIGS					
BP	5036	73.2128	23.28	19.65	26.50
BO	2321	76.1034	22.96	20.68	25.00
BR	188	77.1265	22.96	15.00	23.95
BC	14	73.7629	20.51	18.00	22.00
BU	10	70.23	20.88	19.60	23.50
PP	979	48.84	24.46	22.20	26.00
PO	80	47.38	24.00	18.74	26.00
PR	12	43.74	22.72	21.50	26.00
PC	3	45	22.56	21.50	24.00
SAB	98	106.71	14.90	6.00	18.62
HP	3399	85.30	23.71	22.00	25.00
HO	4607	87.10	23.94	22.00	24.69
HR	1074	89.07	23.35	11.80	23.92
HC	85	88.37	21.14	18.00	23.50
HU	7	91.98	18.67	18.67	18.67
HS	2	101.55	12.26	9.40	15.10
CP	919	60.69	23.87	22.10	26.50
CO	92	61.39	24.01	22.87	26.00
CR	11	62.45	22.50	20.50	24.02
SAS	371	136.417	15.89	11.87	18.62
19 308					

Baconer BO - Purchase Price



Hide	Feedlot	15.47
	Veldt	15.44
Dorper	ea	46.82
Merino	ea	89.06

THIS INFORMATION IS PROTECTED AGAINST COPYING OR DISTRIBUTION WITHOUT PRIOR PERMISSION FROM THE RMAA BOARD.

FOR ENQUIRIES, PLEASE CONTACT RMAA AT TEL (012) 349 1237/8 or priceinformation@rmaa.co.za

Disclaimer: In no event shall the RMAA be liable for any direct, special, indirect or consequential damages, or any other damages of any kind, including but not limited to loss of use, loss of profits, or loss of data, whether in an action in contract, tort (including but not limited to negligence), or otherwise, arising out of or in any way connected with the use of this information. While the RMAA takes great care in compiling the contents of this page, it is nevertheless only meant to provide non-binding general information and cannot replace detailed individual advice to help the prospective buyer make his decision. The RMAA does not guarantee that the information on these pages is up-to-date, accurate and complete.