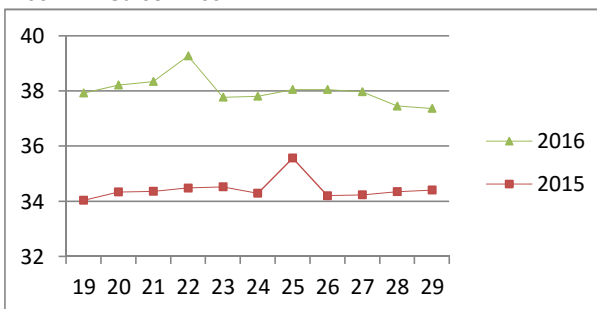


NATIONAL SOUTH AFRICAN PRICE INFORMATION FOR WEEK 29

From 2016/07/18 To 2016/07/24

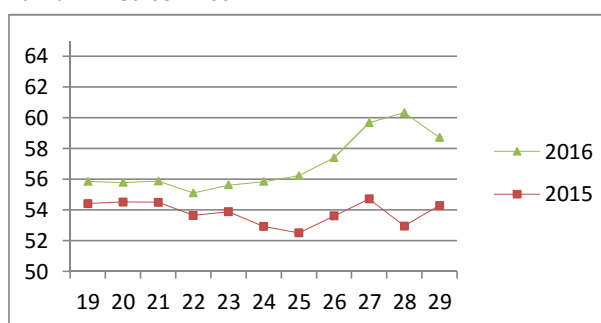
Class	Units	Avg Mass	Avg Purch Price	Avg Selling Price	Selling min	Selling max
CATTLE						
A2	9754	261.09	37.70	37.36	35.00	39.00
A3	1373	282.87	37.74	37.27	35.81	39.27
AB2	447	268.28	35.77	36.38	30.10	40.38
AB3	105	299.20	35.02	35.67	32.62	40.38
B2	560	270.44	32.53	33.22	26.00	34.90
B3	89	293.12	31.79	33.10	31.46	34.50
C2	2284	251.23	30.02	30.52	27.84	32.70
C3	640	280.74	30.07	31.15	28.00	32.70
	15,252					

Beef A2 - Sales Price



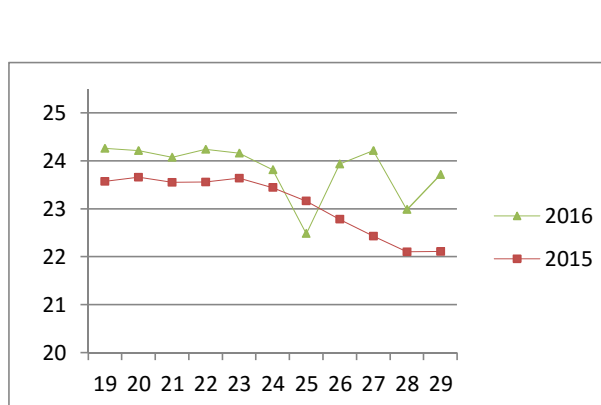
Class	Units	Avg Mass	Avg Purch Price	Avg Selling Price	Selling min	Selling max
LAMB/SHEEP						
A0	188	14.00	51.07	51.27	38.00	53.00
A1	862	16.91	59.60	59.31	50.00	60.50
A2	9793	21.53	57.59	58.72	54.79	64.19
A3	1553	23.96	57.63	57.88	53.97	61.81
A4	232	25.70	51.31	51.14	48.00	58.59
A5	29	24.53	44.45	47.10	39.00	55.00
A6	27	24.93	43.98	45.41	42.26	55.00
AB2	105	21.92	50.22	51.70	48.00	59.70
AB3	48	28.75	47.15	47.28	29.00	59.70
B2	207	26.54	44.31	46.58	37.00	50.40
B3	90	29.27	45.76	47.19	41.00	50.00
C2	652	25.19	44.36	46.46	41.00	48.71
C3	278	27.00	45.46	46.16	42.74	48.69
	14,064					

Lamb A2 - Sales Price



Class	Units	Avg Mass	Avg Purch Price	Purch Min	Purch Max
PIGS					
BP	5723	73.35	23.47	22.00	26.50
BO	2246	76.29	23.71	22.00	25.00
BR	187	76.45	23.11	21.30	23.93
BC	30	74.73	20.48	16.33	23.00
BU	3	69.39	19.65	18.34	23.00
BS	1	87.30	17.00	17.00	17.00
PP	1018	49.02	24.23	22.00	26.00
PO	81	50.54	23.40	21.50	26.00
PR	3	49.17	23.04	22.00	24.00
PS	18	27.09	19.00	19.00	19.00
SAB	253	102.90	13.24	8.00	19.50
HP	4998	84.96	23.45	22.00	25.04
HO	5180	86.48	23.62	22.00	24.74
HR	911	88.05	23.08	20.63	23.88
HC	73	87.31	19.67	15.64	22.10
HU	8	87.13	19.25	17.60	22.10
HS	18	89.86	17.01	9.40	23.50
CP	1177	60.93	23.56	22.10	26.50
CO	188	62.58	23.63	22.75	26.00
CR	43	63.56	22.98	21.00	24.00
CC	2	60.58	20.92	20.84	21.00
SAS	590	147.16	15.54	10.28	17.30
	22,751				

Baconer BO - Purchase Price



Hide	Feedlot	15.49
	Veldt	15.43
Dorper	ea	43.25
Merino	ea	85.67

THIS INFORMATION IS PROTECTED AGAINST COPYING OR DISTRIBUTION WITHOUT PRIOR PERMISSION FROM THE RMAA BOARD.

FOR ENQUIRIES, PLEASE CONTACT RMAA AT TEL (012) 349 1237/8 or priceinformation@rmaa.co.za

Disclaimer: In no event shall the RMAA be liable for any direct, special, indirect or consequential damages, or any other damages of any kind, including but not limited to loss of use, loss of profits, or loss of data, whether in an action in contract, tort (including but not limited to negligence), or otherwise, arising out of or in any way connected with the use of this information. While the RMAA takes great care in compiling the contents of this page, it is nevertheless only meant to provide non-binding general information and cannot replace detailed individual advice to help the prospective buyer make his decision. The RMAA does not guarantee that the information on these pages is up-to-date, accurate and complete.