

## NATIONAL SOUTH AFRICAN PRICE INFORMATION FOR WEEK 4

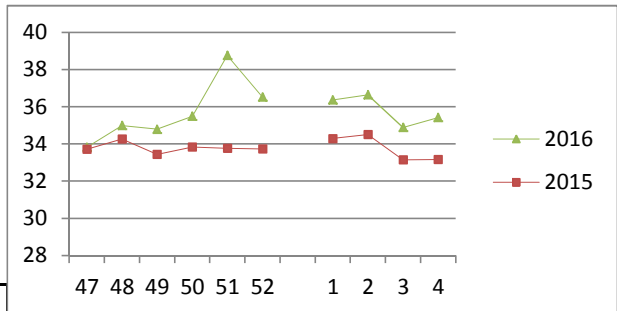
Class Units Avg Mass Avg Purch Price Avg Selling Price Selling min Selling max From 2016/01/25 To 2016/01/31

### CATTLE

Class	Units	Avg Mass	Avg Purch Price	Avg Selling Price	Selling min	Selling max
A2	12204	262.79	<b>35.46</b>	<b>35.42</b>	33.00	36.00
A3	1597	276.45	<b>35.63</b>	<b>35.43</b>	32.76	36.00
AB2	356	257.41	<b>33.96</b>	<b>33.30</b>	28.17	35.30
AB3	72	287.05	<b>34.30</b>	<b>32.55</b>	30.00	35.30
B2	221	241.12	<b>30.29</b>	<b>30.59</b>	26.93	34.90
B3	48	274.64	<b>31.23</b>	<b>30.70</b>	27.00	34.90
C2	1362	246.64	<b>28.65</b>	<b>28.49</b>	24.26	31.00
C3	256	288.49	<b>29.32</b>	<b>29.12</b>	26.01	32.80
16 116						

Average side price R34.82 per Kg

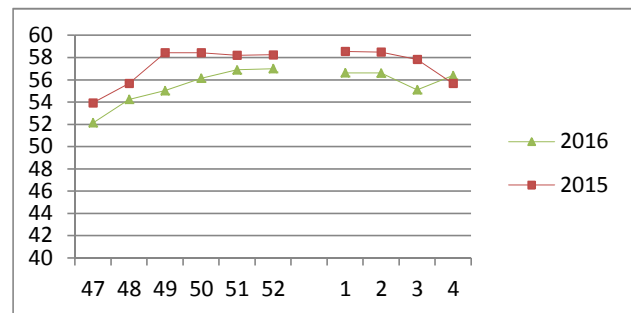
### Beef A2 - Sales Price



### LAMB/SHEEP

Class	Units	Avg Mass	Avg Purch Price	Avg Selling Price	Selling min	Selling max
A0	303	11.49	<b>43.62</b>	<b>44.11</b>	38.00	53.00
A1	1141	14.68	<b>53.05</b>	<b>55.55</b>	45.00	56.71
A2	10912	19.30	<b>54.76</b>	<b>56.38</b>	52.00	62.21
A3	2730	21.70	<b>55.08</b>	<b>55.89</b>	52.00	60.59
A4	337	21.84	<b>46.29</b>	<b>48.63</b>	45.50	60.59
A5	57	21.28	<b>40.98</b>	<b>41.11</b>	36.50	48.00
A6	88	19.69	<b>41.10</b>	<b>40.89</b>	35.00	48.30
AB2	270	19.12	<b>45.90</b>	<b>51.47</b>	44.30	395.00
AB3	49	23.31	<b>47.34</b>	<b>49.53</b>	44.30	56.25
B2	99	23.28	<b>42.78</b>	<b>43.65</b>	40.00	49.00
B3	25	26.28	<b>42.09</b>	<b>43.71</b>	41.01	51.95
C2	530	22.79	<b>40.88</b>	<b>42.25</b>	36.60	51.00
C3	108	25.23	<b>40.57</b>	<b>42.08</b>	39.49	44.99
16 649						

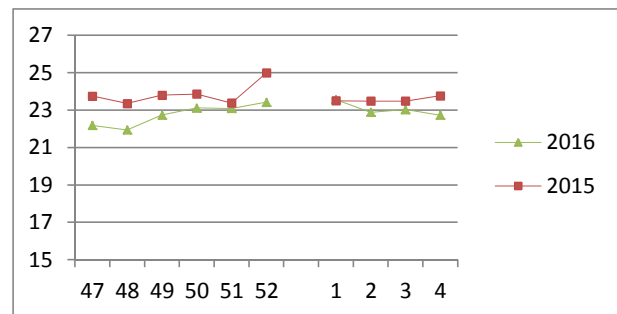
### Lamb A2 - Sales Price



### PIGS

Class	Units	Avg Mass	Avg Purch Price	Purch Min	Purch Max
BC	4	69.7	<b>21.41</b>	18.70	22.60
BO	1463	75.098	<b>22.73</b>	22.00	24.91
BP	3968	72.429	<b>22.75</b>	22.00	26.00
BR	96	75.445	<b>21.25</b>	15.00	23.17
BS	1	77.90	<b>18.90</b>	18.90	18.90
BU	1	80.5	<b>17.50</b>	17.50	17.50
PC	2	44.9	<b>21.00</b>	21.00	21.00
PO	107	49.04	<b>23.91</b>	21.00	25.00
PP	1144	49.63	<b>23.57</b>	22.00	28.00
PR	38	48.73	<b>23.02</b>	20.50	24.50
SAS	91	125.79	<b>16.13</b>	15.00	17.18
HP	7	86.869	<b>18.24</b>	16.50	19.50
HO	1724	87.627	<b>22.52</b>	21.50	24.00
HR	1513	85.509	<b>22.58</b>	22.00	24.00
HC	236	88.875	<b>21.79</b>	20.50	24.00
HU	2	100.2	<b>9.4</b>	9.40	9.40
HS	4	86.55	<b>12.12</b>	9.40	13.00
CO	42	60.67	<b>23.25</b>	21.00	23.50
CP	460	59.13	<b>23.74</b>	10.00	27.00
CR	12	59.68	<b>23.27</b>	20.50	23.50
SAU	452	154.68	<b>15.31</b>	12.53	17.18

### Baconer BO - Purchase Price



Hide	Feedlot	13.49
	Veldt	13.49
Dorper	ea	79.00
Merino	ea	85.37

11 367

THIS INFORMATION IS PROTECTED AGAINST COPYING OR DISTRIBUTION WITHOUT PRIOR PERMISSION FROM THE RMAA BOARD.

FOR ENQUIRIES, PLEASE CONTACT RMAA AT TEL (012) 349 1237/8 or [priceinformation@maa.co.za](mailto:priceinformation@maa.co.za)

Disclaimer: In no event shall the RMAA be liable for any direct, special, indirect or consequential damages, or any other damages of any kind, including but not limited to loss of use, loss of profits, or loss of data, whether in an action in contract, tort (including but not limited to negligence), or otherwise, arising out of or in any way connected with the use of this information. While the RMAA takes great care in compiling the contents of this page, it is nevertheless only meant to provide non-binding general information and cannot replace detailed individual advice to help the prospective buyer make his decision. The RMAA does not guarantee that the information on these pages is up-to-date, accurate and complete.