

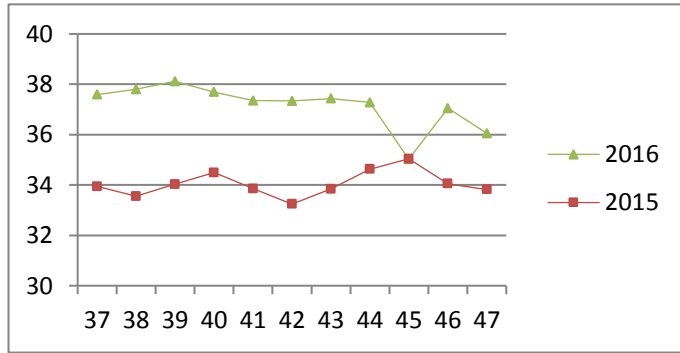
# NATIONAL SOUTH AFRICAN PRICE INFORMATION FOR WEEK 47

Class Units Avg Mass Avg Purch Price Avg Selling Price Selling min Selling max From 2016/11/21 To 2016/11/27

## CATTLE

Class	Units	Avg Mass	Avg Purch Price	Avg Selling Price	Selling min	Selling max
A2	15999	263.41	<b>37.60</b>	<b>36.90</b>	35.76	39.66
A3	2180	283.20	<b>37.58</b>	<b>35.49</b>	26.28	39.09
AB2	623	261.98	<b>36.33</b>	<b>36.25</b>	32.50	40.06
AB3	139	292.83	<b>36.38</b>	<b>36.18</b>	33.35	40.06
B2	379	247.59	<b>34.08</b>	<b>33.96</b>	25.32	36.50
B3	72	286.51	<b>34.41</b>	<b>33.60</b>	25.32	41.85
C2	1252	248.29	<b>33.18</b>	<b>33.30</b>	29.65	35.50
C3	351	278.60	<b>33.13</b>	<b>33.52</b>	29.65	36.00
20 995						

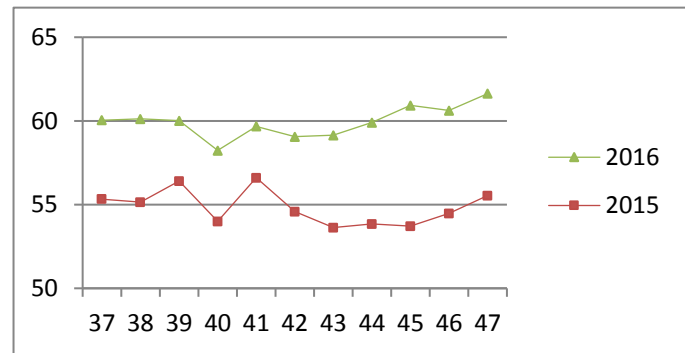
Beef A2 - Sales Price



## LAMB/SHEEP

A0	506	14.13	<b>51.00</b>	<b>52.85</b>	48.39	55.12
A1	2030	17.56	<b>62.23</b>	<b>60.39</b>	57.16	62.00
A2	16059	20.88	<b>62.58</b>	<b>61.63</b>	60.00	63.79
A3	3340	22.76	<b>62.99</b>	<b>61.34</b>	59.00	62.83
A4	587	23.43	<b>54.66</b>	<b>55.98</b>	51.00	66.25
A5	119	24.72	<b>50.70</b>	<b>50.74</b>	44.00	56.47
A6	180	21.56	<b>41.80</b>	<b>46.33</b>	44.41	45.55
AB2	257	22.26	<b>54.47</b>	<b>51.48</b>	44.67	56.21
AB3	67	26.19	<b>53.63</b>	<b>51.31</b>	35.95	64.70
B2	295	25.36	<b>46.76</b>	<b>49.34</b>	42.48	54.14
B3	79	29.16	<b>47.04</b>	<b>46.55</b>	42.45	53.90
C2	1644	23.77	<b>47.58</b>	<b>47.83</b>	42.47	52.00
C3	422	27.56	<b>47.69</b>	<b>47.66</b>	45.00	52.78
25 585						

Lamb A2 - Sales Price

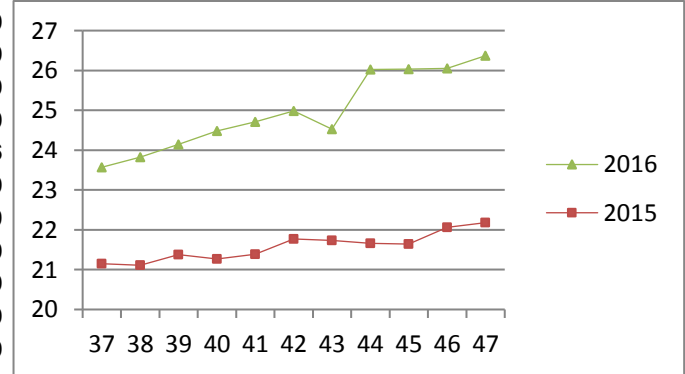


## PIGS

Class	Units	Avg Mass	Avg Purch Price	Purch Min	Purch Max
BP	7508	73.35	<b>25.98</b>	22.30	29.00
BO	3220	75.19	<b>26.37</b>	22.30	29.00
BR	307	75.86	<b>25.16</b>	23.74	27.50
BC	21	74.04	<b>19.98</b>	15.00	22.50
BU	5	74.27	<b>13.85</b>	13.00	16.96
BS	11	77.63	<b>15.94</b>	11.00	22.00
PP	2903	51.74	<b>26.79</b>	24.52	31.49
PO	179	52.02	<b>26.46</b>	22.50	31.50
PR	24	49.43	<b>24.87</b>	20.60	27.50
PC	9	43.04	<b>18.08</b>	17.22	24.50
PU	1	50.10	<b>14.00</b>	14.00	14.00
SAB	99	122.02	<b>13.45</b>	6.00	21.00
HP	4716	84.30	<b>25.52</b>	22.30	27.99
HO	4175	85.70	<b>25.39</b>	22.30	28.00
HR	883	86.53	<b>25.09</b>	23.36	29.00
HC	64	87.20	<b>21.89</b>	19.00	29.00
HU	17	87.13	<b>22.06</b>	13.36	29.00
HS	15	93.34	<b>16.71</b>	11.00	24.50
CP	2155	60.89	<b>26.90</b>	24.11	30.75
CO	411	62.97	<b>26.55</b>	25.81	30.00
CR	32	63.28	<b>26.24</b>	22.50	27.00
CC	7	62.12	<b>21.22</b>	16.00	26.50
CU	2	61.90	<b>13.00</b>	13.00	13.00
CS	1	64.40	<b>11.00</b>	11.00	11.00
SAS	525	160.66	<b>17.46</b>	14.00	21.50
27 290					

Hide	Feedlot	<b>15.64</b>
	Veldt	<b>15.68</b>
Dorper	ea	<b>42.27</b>
Merino	ea	<b>79.17</b>

Baconer BO - Purchase Price



THIS INFORMATION IS PROTECTED AGAINST COPYING OR DISTRIBUTION WITHOUT PRIOR PERMISSION FROM THE RMAA BOARD.

FOR ENQUIRIES, PLEASE CONTACT RMAA AT TEL (012) 349 1237/8 or [priceinformation@rmaa.co.za](mailto:priceinformation@rmaa.co.za)

Disclaimer: In no event shall the RMAA be liable for any direct, special, indirect or consequential damages, or any other damages of any kind, including but not limited to loss of use, loss of profits, or loss of data, whether in an action in contract, tort (including but not limited to negligence), or otherwise, arising out of or in any way connected with the use of this information. While the RMAA takes great care in compiling the contents of this page, it is nevertheless only meant to provide non-binding general information and cannot replace detailed individual advice to help the prospective buyer make his decision. The RMAA does not guarantee that the information on these pages is up-to-date, accurate and complete.