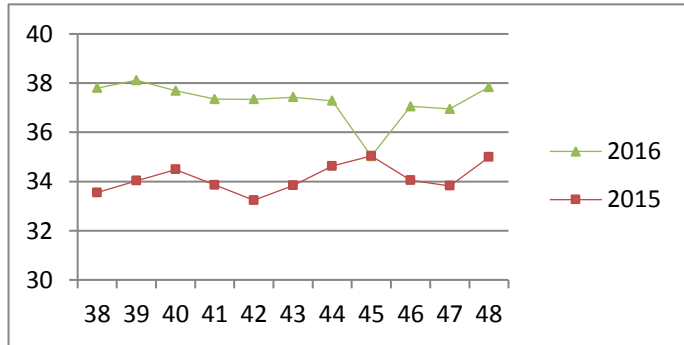


# NATIONAL SOUTH AFRICAN PRICE INFORMATION FOR WEEK 48

From 2016/11/28 To 2016/12/04

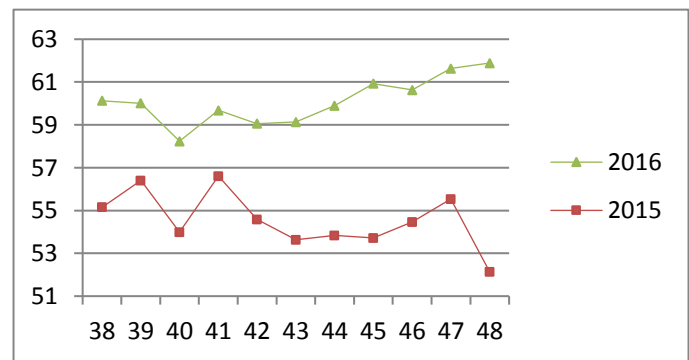
Class	Units	Avg Mass	Avg Purch Price	Avg Selling Price	Selling min	Selling max
<b>CATTLE</b>						
A2	17718	260.64	<b>37.93</b>	<b>37.84</b>	36.00	44.32
A3	2303	280.01	<b>38.00</b>	<b>37.79</b>	36.00	42.15
AB2	726	259.85	<b>36.59</b>	<b>37.39</b>	31.50	40.50
AB3	160	282.44	<b>36.64</b>	<b>37.24</b>	33.60	39.79
B2	337	236.86	<b>34.09</b>	<b>34.86</b>	32.00	40.35
B3	63	289.09	<b>34.03</b>	<b>34.50</b>	32.00	37.54
C2	1181	249.64	<b>33.18</b>	<b>33.89</b>	27.85	36.50
C3	313	279.31	<b>33.53</b>	<b>33.85</b>	31.00	36.50
22 801						

**Beef A2 - Sales Price**



Class	Units	Avg Mass	Avg Purch Price	Avg Selling Price	Selling min	Selling max
<b>LAMB/SHEEP</b>						
A0	884	14.13	<b>52.87</b>	<b>54.00</b>	50.00	56.00
A1	2964	15.94	<b>62.22</b>	<b>62.29</b>	57.00	64.50
A2	20001	20.02	<b>63.79</b>	<b>61.89</b>	47.72	64.77
A3	3741	22.21	<b>63.75</b>	<b>61.78</b>	53.03	65.38
A4	745	22.67	<b>55.41</b>	<b>57.41</b>	52.00	61.71
A5	179	23.02	<b>51.04</b>	<b>51.05</b>	42.61	61.37
A6	273	20.90	<b>48.70</b>	<b>50.08</b>	44.21	56.68
AB2	254	22.44	<b>56.46</b>	<b>55.25</b>	52.74	60.00
AB3	59	24.95	<b>55.15</b>	<b>56.44</b>	50.35	62.63
B2	704	23.88	<b>49.47</b>	<b>52.57</b>	48.00	55.07
B3	156	26.57	<b>51.28</b>	<b>52.68</b>	44.78	54.00
C2	1381	24.09	<b>46.81</b>	<b>47.77</b>	42.81	52.31
C3	449	27.22	<b>47.64</b>	<b>47.88</b>	46.22	52.00
31 790						

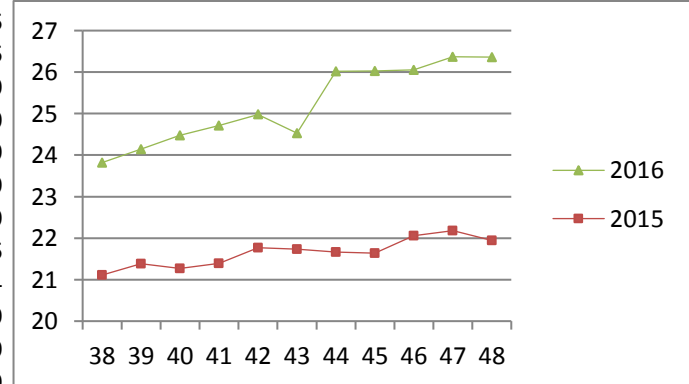
**Lamb A2 - Sales Price**



Hide	Feedlot	<b>15.88</b>
	Veldt	<b>15.86</b>
Dorper	ea	<b>43.89</b>
Merino	ea	<b>92.50</b>

Class	Units	Avg Mass	Avg Purch Price	Purch Min	Purch Max
<b>PIGS</b>					
BP	7563	72.7392	<b>26.13</b>	22.30	31.05
BO	3707	75.1864	<b>26.36</b>	22.30	31.05
BR	407	76.1216	<b>25.86</b>	23.80	29.00
BC	28	73.4021	<b>23.59</b>	19.85	29.00
BU	10	76.028	<b>24.51</b>	13.00	29.00
BS	9	81.21	<b>23.36</b>	11.00	29.00
PP	3306	50.30	<b>27.47</b>	22.50	31.90
PO	296	48.44	<b>27.73</b>	23.04	32.55
PR	58	48.59	<b>26.39</b>	17.06	32.44
PC	15	50.41	<b>17.78</b>	12.00	24.50
PU	2	53.80	<b>13.00</b>	13.00	13.00
SAB	60	124.05	<b>12.27</b>	8.00	23.00
HP	3010	84.25	<b>25.36</b>	23.69	28.12
HO	3554	85.26	<b>25.44</b>	22.30	28.00
HR	650	86.22	<b>24.81</b>	23.26	27.50
HC	53	86.11	<b>19.37</b>	13.87	25.00
HU	5	83.98	<b>19.06</b>	13.00	25.00
HS	12	89.66	<b>11.14</b>	9.40	13.50
CP	2166	62.00	<b>27.42</b>	22.40	34.64
CO	489	63.1	<b>26.98</b>	22.40	29.98
CR	51	62.68	<b>26.84</b>	25.16	27.50
CC	12	65.14	<b>23.79</b>	16.00	27.00
CU	2	62.45	<b>13.00</b>	13.00	13.00
SAS	490	164.74	<b>17.52</b>	14.00	21.00
25 995					

**Baconer BO - Purchase Price**



**THIS INFORMATION IS PROTECTED AGAINST COPYING OR DISTRIBUTION WITHOUT PRIOR PERMISSION FROM THE RMAA BOARD.**

**FOR ENQUIRIES, PLEASE CONTACT RMAA AT TEL (012) 349 1237/8 or [priceinformation@rmaa.co.za](mailto:priceinformation@rmaa.co.za)**

Disclaimer: In no event shall the RMAA be liable for any direct, special, indirect or consequential damages, or any other damages of any kind, including but not limited to loss of use, loss of profits, or loss of data, whether in an action in contract, tort (including but not limited to negligence), or otherwise, arising out of or in any way connected with the use of this information. While the RMAA takes great care in compiling the contents of this page, it is nevertheless only meant to provide non-binding general information and cannot replace detailed individual advice to help the prospective buyer make his decision. The RMAA does not guarantee that the information on these pages is up-to-date, accurate and complete.