

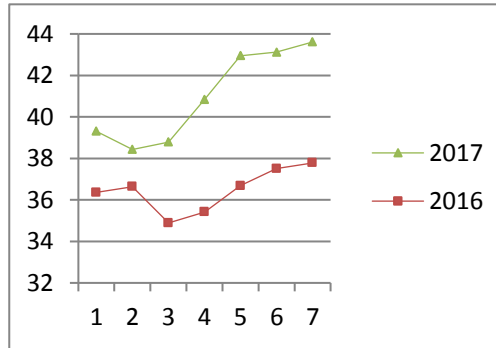
NATIONAL SOUTH AFRICAN PRICE INFORMATION FOR WEEK 7

From 2017/02/13 To 2017/02/19

CATTLE

Class	Units	Avg Mass	Avg Purch Price	Avg Selling Price	Selling min	Selling max
A2	7691	263.57	43.68	43.61	41.00	46.04
A3	877	290.84	43.27	43.79	40.73	46.05
AB2	353	252.38	40.73	41.67	35.00	44.88
AB3	102	253.89	42.03	43.01	37.00	44.88
B2	330	244.69	37.17	38.19	32.50	44.88
B3	58	264.39	37.07	37.73	33.50	39.72
C2	1567	252.70	35.91	36.12	32.50	39.96
C3	431	272.90	35.85	36.50	26.06	38.00
11 409						

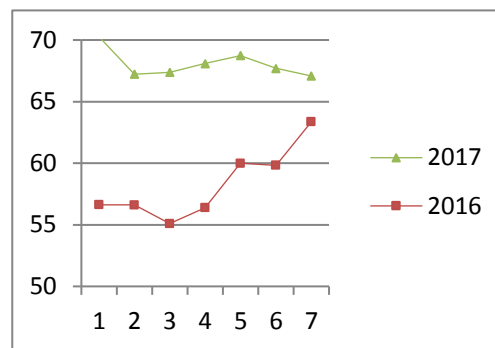
Beef A2 - Sales Price



LAMB/SHEEP

A0	249	13.50	48.98	50.94	34.54	60.97
A1	1230	16.00	65.82	65.92	58.72	71.09
A2	10338	18.80	66.66	67.08	61.08	70.69
A3	1715	19.96	65.45	65.80	61.74	70.14
A4	323	19.86	56.84	55.70	52.13	60.59
A5	86	19.95	54.67	49.70	46.88	52.54
A6	88	20.45	53.51	49.61	42.60	55.60
AB2	172	19.38	56.63	57.39	50.00	64.39
AB3	24	22.26	60.43	57.56	55.00	64.50
B2	433	25.43	50.34	51.45	50.06	55.57
B3	56	26.61	43.80	52.01	48.63	55.47
C2	1101	22.51	50.46	50.11	46.90	58.32
C3	309	27.48	50.68	51.09	46.99	55.89
16 124						

Lamb A2 - Sales Price

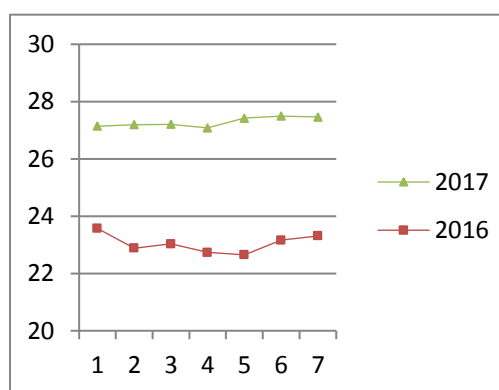


Hide	Feedlot	15.80
	Veldt	15.78
Dorper	ea	44.41
Merino	ea	93.41

PIGS

		Avg Purch Price	Purch Min	Purch Max
BP	6781	74.09	27.02	22.30
BO	2600	74.76	27.46	22.30
BR	253	77.35	26.49	24.95
BC	19	76.59	23.39	20.53
BU	4	72.73	24.57	19.64
BS	2	96.60	26.50	26.50
PP	1902	52.03	28.74	22.50
PO	150	51.26	28.63	22.72
PR	12	48.80	27.07	25.50
PC	8	50.60	25.72	19.50
PU	1	50.80	10.00	10.00
PS	1	49.45	10.00	10.00
SAB	154	123.69	13.82	8.00
HP	3324	86.53	25.74	24.32
HO	2730	87.87	25.97	22.30
HR	494	88.55	24.71	20.90
HC	53	88.51	20.21	16.32
HU	10	86.60	20.34	14.00
HS	12	90.49	11.38	9.40
CP	2022	61.69	28.01	24.17
CO	210	63.18	27.99	22.40
CR	29	60.98	27.39	25.06
CC	2	61.00	25.62	25.62
CS	2	18.90	17.50	17.50
SAS	620	144.99	17.60	16.00
21395				

Baconer BO - Purchase Price



THIS INFORMATION IS PROTECTED AGAINST COPYING OR DISTRIBUTION WITHOUT PRIOR PERMISSION FROM THE RMAA BOARD.

FOR ENQUIRIES, PLEASE CONTACT RMAA AT TEL (012) 349 1237/8 or priceinformation@rmaa.co.za

Disclaimer: In no event shall the RMAA be liable for any direct, special, indirect or consequential damages, or any other damages of any kind, including but not limited to loss of use, loss of profits, or loss of data, whether in an action in contract, tort (including but not limited to negligence), or otherwise, arising out of or in any way connected with the use of this information. While the RMAA takes great care in compiling the contents of this page, it is nevertheless only meant to provide non-binding general information and cannot replace detailed individual advice to help the prospective buyer make his decision. The RMAA does not guarantee that the information on these pages is up-to-date, accurate and complete.