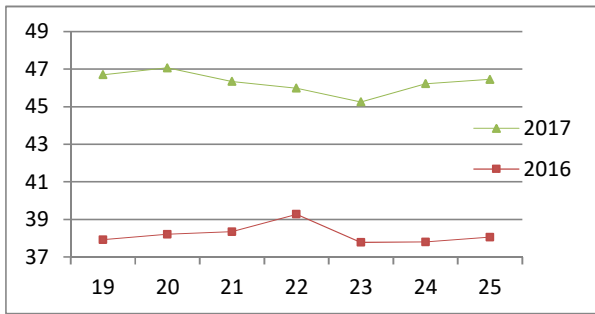


# NATIONAL SOUTH AFRICAN PRICE INFORMATION FOR WEEK Week 25

From 2017/06/18 To 2017/06/25

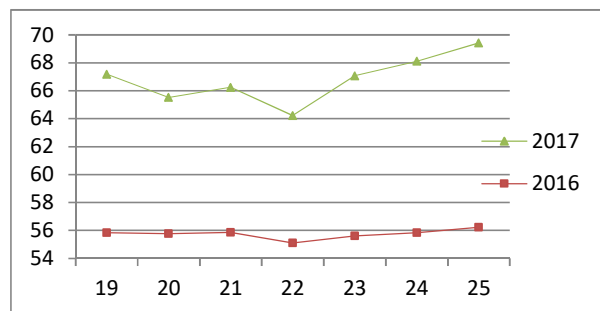
Class	Units	Avg Mass	Avg Purch Price	Avg Selling Price	Selling min	Selling max
<b>CATTLE</b>						
A2	9667	264,31	<b>47,66</b>	<b>46,45</b>	45,03	47,53
A3	1341	282,99	<b>47,36</b>	<b>46,63</b>	45,09	48,29
AB2	866	264,68	<b>46,06</b>	<b>44,94</b>	42,39	46,20
AB3	177	285,75	<b>46,15</b>	<b>45,12</b>	42,83	46,09
B2	595	251,27	<b>42,37</b>	<b>42,02</b>	39,48	44,09
B3	123	283,47	<b>43,36</b>	<b>43,20</b>	40,63	45,26
C2	2093	248,97	<b>40,28</b>	<b>40,17</b>	38,46	41,48
C3	520	281,36	<b>40,33</b>	<b>40,37</b>	38,68	41,65
15 382						

**Beef A2 - Sales Price**



Class	Units	Avg Mass	Avg Purch Price	Avg Selling Price	Selling min	Selling max
<b>LAMB/SHEEP</b>						
A0	393	20,24	<b>59,14</b>	<b>61,25</b>	63,84	67,00
A1	1686	15,71	<b>72,26</b>	<b>72,54</b>	63,84	76,00
A2	12347	20,79	<b>73,32</b>	<b>69,43</b>	65,26	73,81
A3	1772	22,54	<b>71,65</b>	<b>68,27</b>	65,07	73,53
A4	322	22,89	<b>61,93</b>	<b>60,53</b>	57,32	67,11
A5	55	22,31	<b>55,65</b>	<b>55,12</b>	47,11	67,64
A6	117	20,85	<b>52,75</b>	<b>53,87</b>	48,85	62,79
AB2	244	21,71	<b>65,68</b>	<b>63,83</b>	57,33	68,10
AB3	37	23,82	<b>62,29</b>	<b>63,03</b>	53,38	67,07
B2	334	24,47	<b>56,58</b>	<b>56,73</b>	51,52	65,12
B3	214	23,89	<b>60,96</b>	<b>62,32</b>	55,64	64,50
C2	981	23,48	<b>53,98</b>	<b>54,47</b>	48,86	58,33
C3	305	26,96	<b>53,94</b>	<b>54,98</b>	51,98	59,25
18 807						

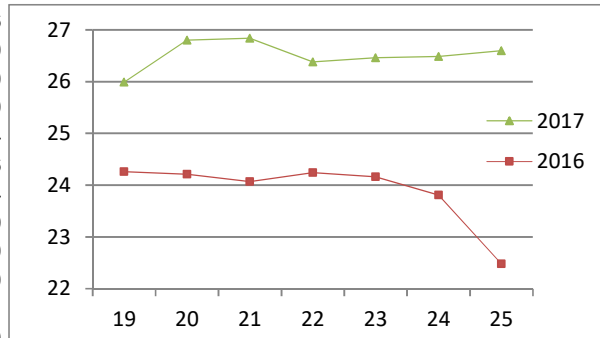
**Lamb A2 - Sales Price**



Class	Units	Avg Mass	Avg Purch Price	Purch Min	Purch Max
<b>PIGS</b>					
PP	2169	53,01	<b>26,26</b>	25,39	28,53
PO	151	51,66	<b>25,80</b>	22,93	28,53
PR	39	48,37	<b>22,52</b>	19,20	26,69
PC	14	49,69	<b>21,47</b>	19,33	24,63
PU	3	47,93	<b>22,02</b>	20,00	25,60
PS	6	129,38	<b>17,48</b>	17,00	24,50
CP	929	62,37	<b>26,57</b>	26,08	27,38
CO	147	63,48	<b>26,56</b>	26,04	27,29
CR	17	72,74	<b>25,85</b>	24,50	26,50
CC	4	63,30	<b>25,60</b>	25,60	25,60
CU	3	63,30	<b>25,60</b>	25,60	25,60
CS	2	62,50	<b>25,60</b>	25,60	25,60
BP	6155	73,28	<b>26,24</b>	24,41	27,86
BO	2265	75,46	<b>26,60</b>	25,48	28,42
BR	276	74,50	<b>25,96</b>	24,60	28,06
BC	35	71,80	<b>24,13</b>	20,53	28,50
BU	4	71,355	<b>23,06</b>	19,00	28,50
BS	9	85,81	<b>20,11</b>	19,00	22,00
HP	4211	85,83	<b>25,47</b>	24,50	26,04
HO	5111	87,94	<b>25,44</b>	24,50	26,06
HR	789	90,83	<b>24,57</b>	24,26	24,94
HC	72	90,36	<b>21,11</b>	20,17	24,39
HU	7	86,86	<b>21,19</b>	19,92	24,50
HS	10	95,84	<b>19,90</b>	18,00	26,50
SAU	740	137,21	<b>19,39</b>	16,34	23,61
SAB	191,00	109,38	<b>22,72</b>	21,29	24,00
23 359					

Hide	Feedlot	15,28
	Veldt	15,28
Dorper	ea	41,36
Merino	ea	98,44

**Baconer BO - Purchase Price**



**THIS INFORMATION IS PROTECTED AGAINST COPYING OR DISTRIBUTION WITHOUT PRIOR PERMISSION FROM THE RMAA BOARD.**

**FOR ENQUIRIES, PLEASE CONTACT RMAA AT TEL (012) 349 1237/8 or [priceinformation@rmaa.co.za](mailto:priceinformation@rmaa.co.za)**

Disclaimer: In no event shall the RMAA be liable for any direct, special, indirect or consequential damages, or any other damages of any kind, including but not limited to loss of use, loss of profits, or loss of data, whether in an action in contract, tort (including but not limited to negligence), or otherwise, arising out of or in any way connected with the use of this information. While the RMAA takes great care in compiling the contents of this page, it is nevertheless only meant to provide non-binding general information and cannot replace detailed individual advice to help the prospective buyer make his decision. The RMAA does not guarantee that the information on these pages is up-to-date, accurate and complete.